

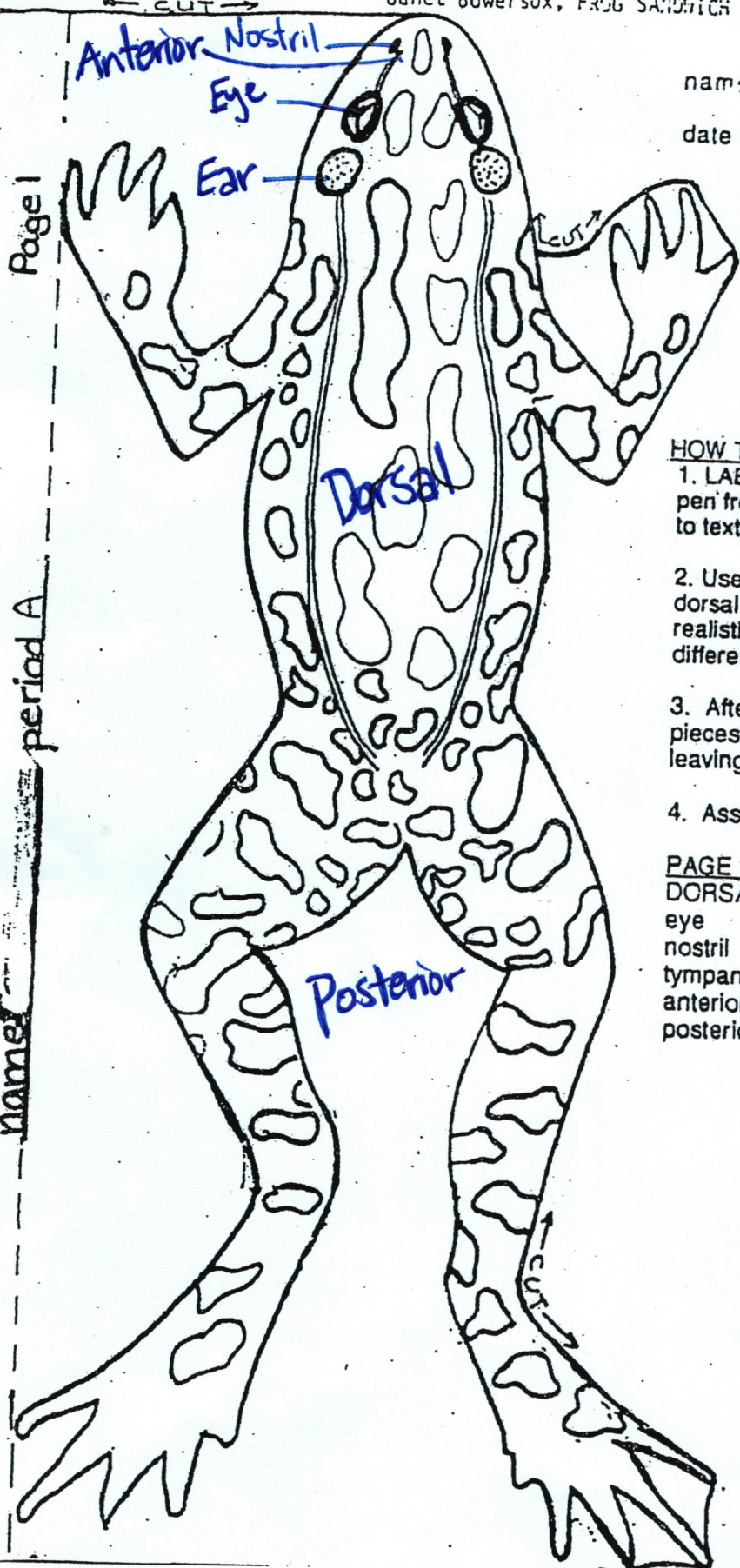
Page 1

period A

Name _____

name _____

date due _____



HOW TO MAKE A FROG SANDWICH

1. LABEL organs, first in pencil, then in pen from the list on each page. Refer to text, posters and classroom charts.
2. Use COLORED PENCILS to color dorsal and ventral surfaces & organs realistically. some organs are seen in different "layers"
3. After labeling and coloring, cut pieces on heavy black outline leaving one side straight for stapling.
4. Assemble frog.

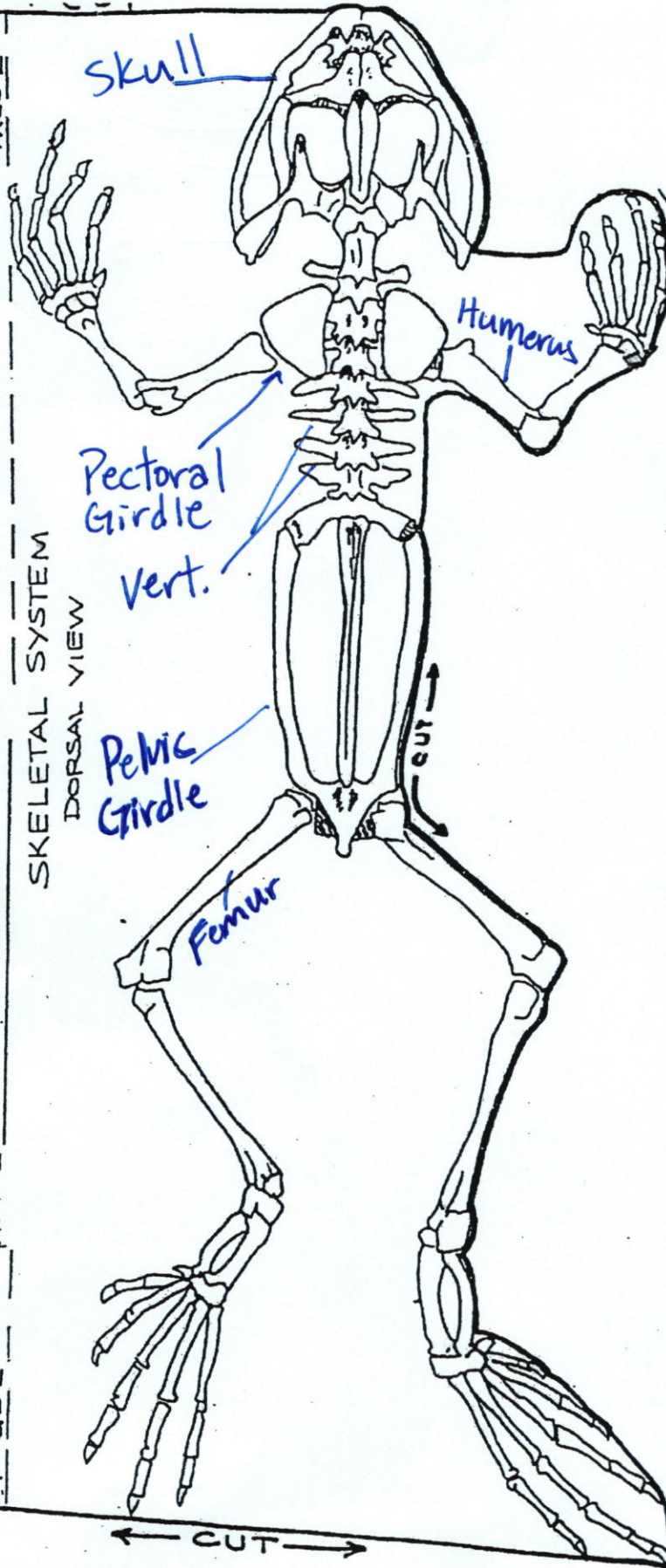
PAGE 1 label:
DORSAL VIEW

- eye
- nostril
- tympanic membrane (ear)
- anterior
- posterior

PAGE 2

SKELETAL SYSTEM
DORSAL VIEW

PAGE 2 NAME



PAGE 2 label
skull
pectoral girdle
pelvic girdle
vertebrae
humerus
femur